

“Post Flood Recovery”

A Brainstorming Session Organized by The Centre for Public Policy & Governance, (CPPG) FC College and The Urban Unit

A policy dialogue “Post Disaster Recovery” on 23rd September 2010 entailed a free exchange of ideas among various stakeholders. It was successfully attended by the representatives of Punjab Government, Donors, NGOs, Academia and distinguished members of Civil Society. **Discussions at the session led to a broad consensus that institutional re-alignment is the key to achieving reconstruction and rehabilitation of Flood 2010 damage infrastructure efficiently.**

The dialogue was divided in three sessions:

- Institutional re-alignment
- Irrigation and Food Security
- Rehabilitation and Town Planning

Critical Issues that were discussed:

- It was suggested that despite high involvement of citizens there was a general lack of co-ordination amongst various organizations regarding flood relief and reconstruction.
- It was agreed that a mutually agreed strategy between the Federal and Provincial Governments would play a constructive and positive role in relief and rehabilitation efforts.
- Need for a focal agency was identified for provision of clear guidelines regarding sectoral priorities.
- It was argued that trust amongst the affectees, the Government, the donors and the NGOs should be increased by inclusion of affected local communities.



Dr. Saeed Shafqat, Director CPPG opening the session

Editorial Board

Javed Aslam

Patron
Chairman, P&D Board

Dr. Nasir Javed

Managing Editor
Project Director, The Urban Unit

Kiran Hassan

Chief Editor

Basharat Hussain

Contributing Editor



Mr. Rab Nawaz, Secretary Irrigation Govt. of Punjab giving his input in the session

Suggested steps to improve re-construction mechanism

- Co-ordination between Federal and Provincial Governments.
- Creation of flood focal agency
- Improved trust amongst affected communities, Government departments, Donors and NGO's

Recommendations for Way Forward

1. Damage Assessment Surveys

- Damage assessment surveys of each and every village /town's public infrastructure can be an effective way for documenting proof.
- The detailed surveys can provide District profiles right down to exact numbers
- The extremely vulnerable (elderly, widows, orphans and disabled etc) can also be marked through surveys
- The participants were informed by Mr. Khalid Sherdil (DG-PDMA) that for reconstruction effort, the Provincial Disaster Management Authority (PDMA) is currently conducting two surveys:

(i) Housing Survey : To assess the damage of houses.

(ii) Crop Survey: To assess the damage of crops verifying the need for fertilizer and seed for the upcoming cropping season.

2. Use of Satellite Imagery

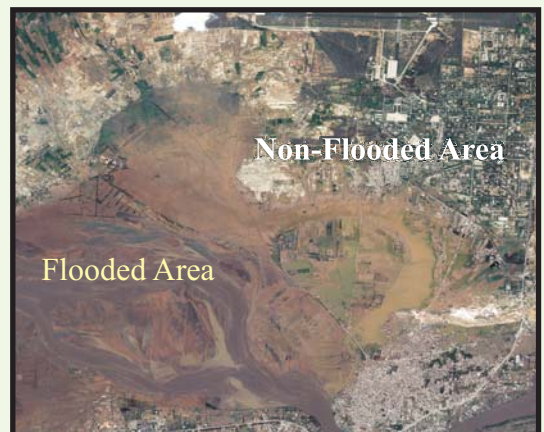
- It was suggested that pre and post flood satellite imagery of the affected areas would facilitate accurate damage assessment.
- Satellite imagery can mark areas which were either never acquired or were washed away in the floods.
- Satellite imagery can collect and verify non documented & non registered land data.



Mr. Khalid Sherdil, DG (PDMA) addressing the session



Damage Assessment Survey: A base for reconstruction



Satellite Imagery showing flooded and non-flooded area



3. Local Community Involvement in the Flood Affected Areas

- There was a general agreement that the **local communities are needed to be involved.**
- Civil society representatives argued for involving ‘Citizen Committees/Councils’ rather than making separate health, farmer and other organizations.
- These Committees/Councils should also be linked up with the Local Government to rehabilitate their respective schools, dispensaries and agriculture extensions etc.



Local community involved in re-construction efforts

4. Transparent Financial Management and Implementation Mechanisms

- The Planning and Development Department of the Government of the Punjab has developed a web-based application called the “Rupee Track” in order to instill donors’ confidence and ensure a transparent financial management system.
- The Rupee Track indicates list of projects, their status and implementing agencies, which can be sorted out according to sector, location (District-Tehsil-Union Council-Village) and size.
- Through the Rupee Track the donors would be able to trace back every rupee/penny spent on their identified scheme(s).

P & D Department

Government of Punjab

Flood 2010- Rupee Track Redevelopment Works

Sector	Education	Governance	Health	Housing	Literacy	Livestock
District	No of Schemes		School ID	Donor		
DGKhan	56		PbLay-0001	Samji Bebbodd		
Jhang	23		PbLay-0009	available		
Khushab	12		PbLay-0011	M. Yousaf (Individual)		
Layyah	41		PbLay-0013	available		
Multan	Layyah	25	PbLay-0015	available		
Miawali	Karor Lal Esan	16	PbLay-0016	available		
Muzaffargarh	33		PbLay-0019	available		
RY Khan	42		PbLay-0021	available		
Rajanpur	19		PbLay-0022	available		
Sargodha	16		PbLay-0025	Anuman		

Bringing Transparency - Gaining Confidence
An interface of Rupee Track

5. Construction of Model Villages

- PDMA proposed construction of “Modern Villages Project” with the support of various NGOs / Private donors.
- It was informed that PDMA had already initiated work on four villages of 100 houses each and was ready to start work on 204 more villages awaiting donors’ commitment.



Building Better - A Model Village Inaugurated

A Collective Effort Learned from the 2005 Earthquake and the ERRA (Earthquake Rehabilitation and Reconstruction Authority) Experience

Based on the previous experience of Earthquake Rehabilitation, it was suggested that ERRA's biggest strength was its hybrid constitution including personnel from the Civil Services, Army and Technocrats which allowed for institutional linkages at all Government levels as well as with NGOs and donor agencies. Administratively it was present at all levels of the State- ERRA at the Federal level, PERRA at the Provincial level and SERRA at the District level. In the case of ERRA, while funding and coordination laid with the Federal Government, the Provincial Government was still responsible for implementation and ownership.



Mr. Tariq Bajwa (former DG, ERRA) sharing functional structure of ERRA

Federal Agency was responsible for:

- Devising uniform/credible benchmarks and data structure for damage need assessment
- Providing one window facilitation for donor funding and coordination
- Establishing standards for reconstruction and unit costs
- Monitoring and audit federating units in terms of progress and quality

District Agency's role was:

- Preparing district plans and managing reconstruction funds
- Coordinating and monitoring implementation of approved schemes
- Interfacing with provincial coordinating unit in terms of strategy, plans, funding and progress reporting
- Managing procurement, bidding, supervision and quality assurance

Provincial Agency was responsible for:

- Providing interface between Federal, Provincial and implementation levels
- Collecting data according to structure and benchmarks for damage need assessment
- Leading provincial and sectoral reconstruction strategy formulation and work plans
- Ensuring standards for reconstruction and unit costs
- Monitoring progress reports for Province & District



Participants of the session involved in the discussion

The *Urban Unit Publications* are research based communication tools for providing informed policy options. The contents **may not** necessarily reflect the Government of Punjab's current official policy.